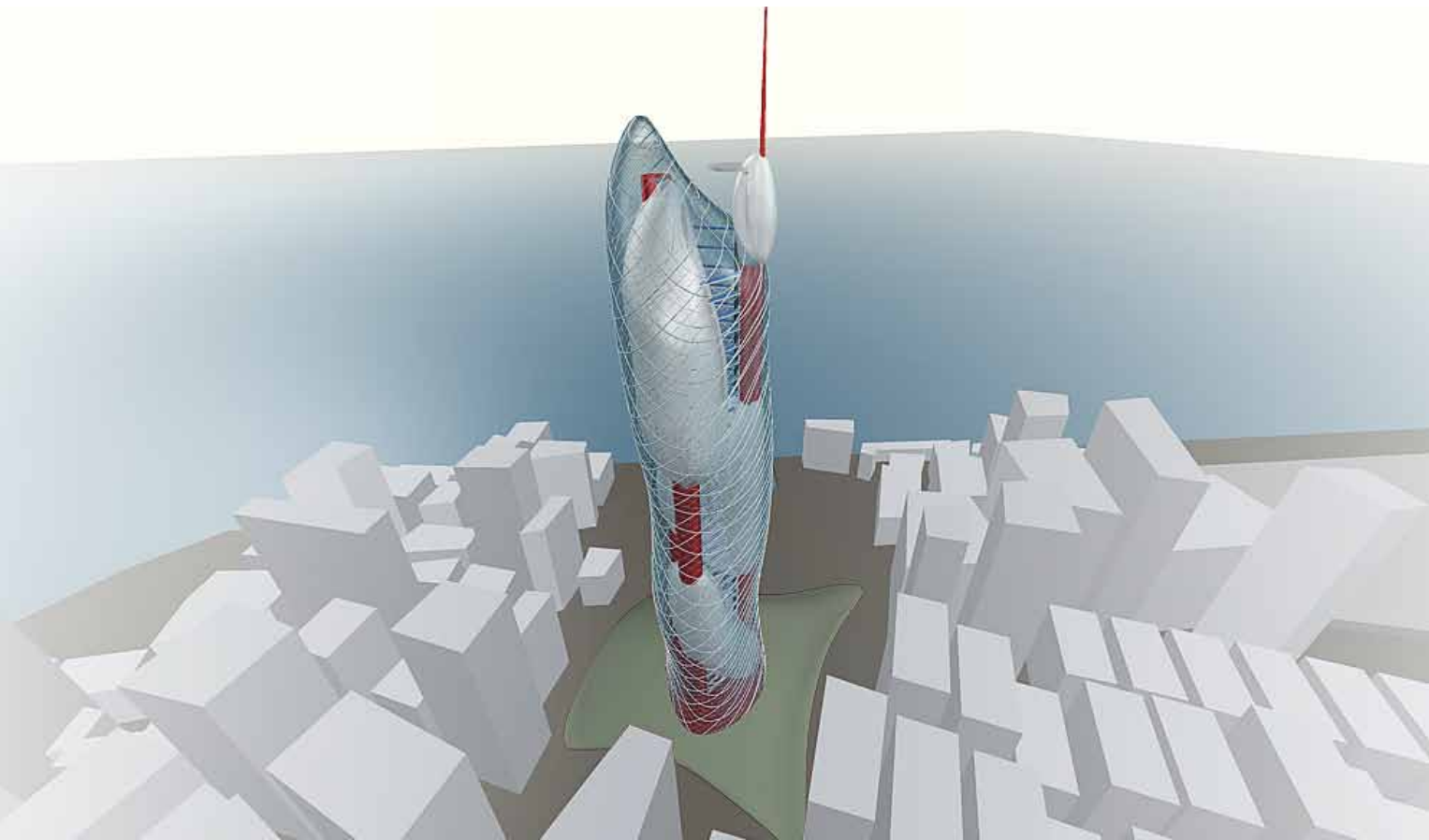


# WORLD TRADE CENTER

CASE STUDY - A NEW HORIZON AFTER 11. SEPTEMBER 2001



A PROJECT OF SWA GROUP

SWA group

---

destinations of excellence

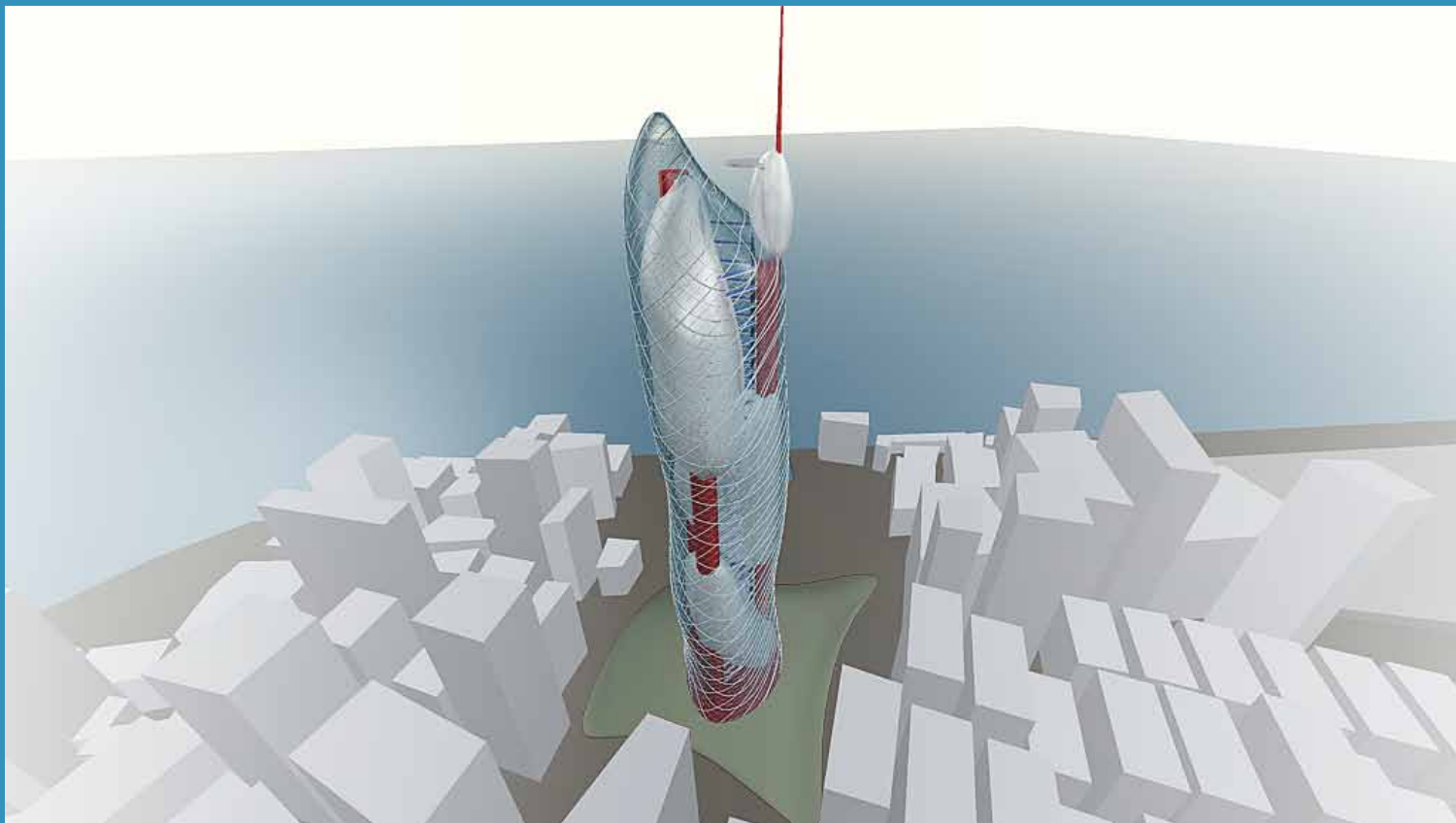
---

# DESIGN CONCEPT FOR THE WORLD TRADE CENTER, NY, USA

## FROM THE TWINTOWERS OF WORLD ECONOMY TO THE TRIPPLE TOWER OF WORLD COMMUNITY

When the World Trade Center was bombed the world was under shock. A hole belief system fell down and the void which was left by the Twin Towers was more than a wound in the city of New York.

This concept of the Tripple Tower of world community had in mind, that the Twin Tower was bombed, because economic and spiritual differences and the believe pattern behind those potential conflicts. The concept for the „Eco Skyscraper is based on a new concept concerning economy, community and spirit.



PROGRAM  
Exhibition & Conference Center,  
Hotel, Wellness, Fitness and Preventioncenter for  
Health

CLIENT  
IAA International Architecture Academy

SCOPE  
Preliminary Design

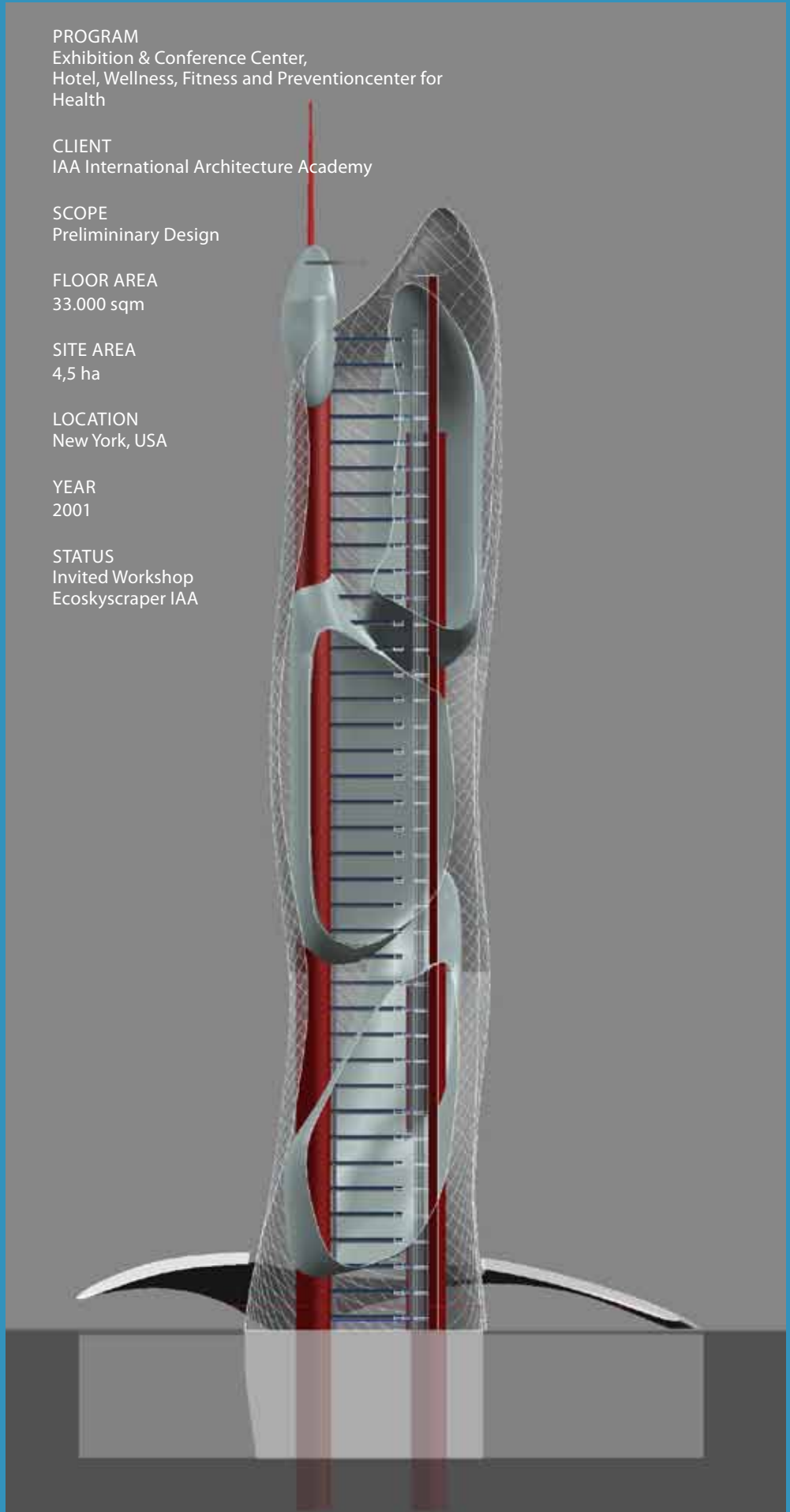
FLOOR AREA  
33.000 sqm

SITE AREA  
4,5 ha

LOCATION  
New York, USA

YEAR  
2001

STATUS  
Invited Workshop  
Ecoskyscraper IAA

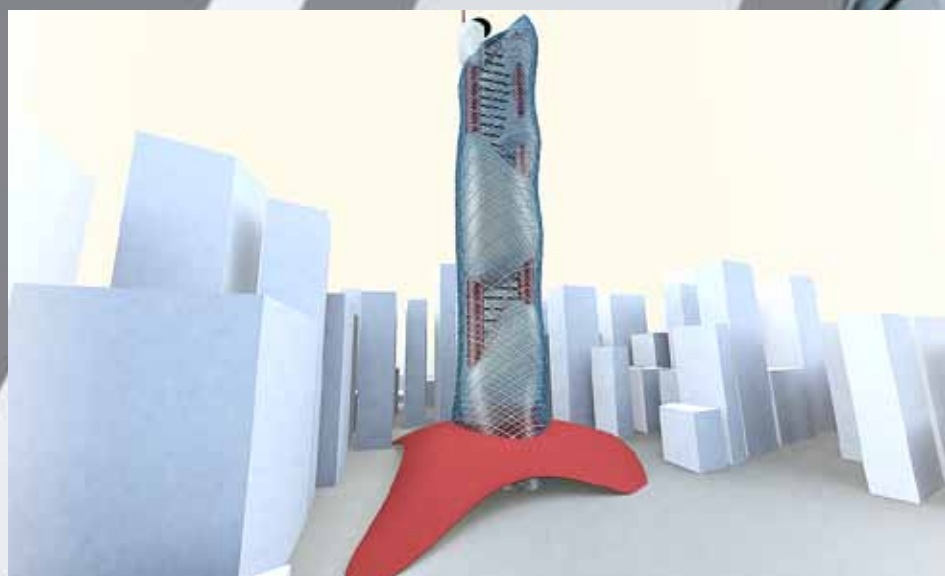
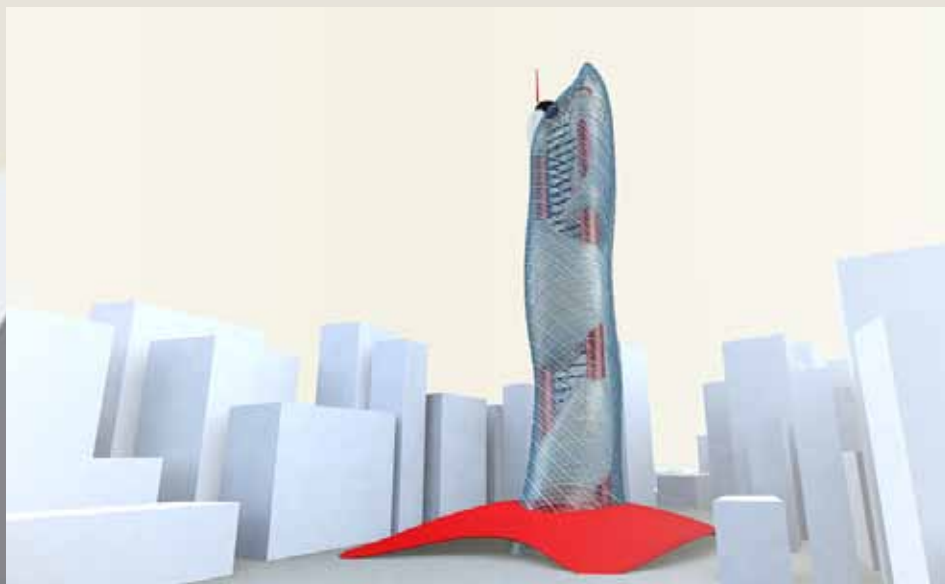


## BIOGENETICS

The Design of the Tower is a view to an extraordinary system of Bioengineering, which we understand as a possibility of interaction between all it's components.

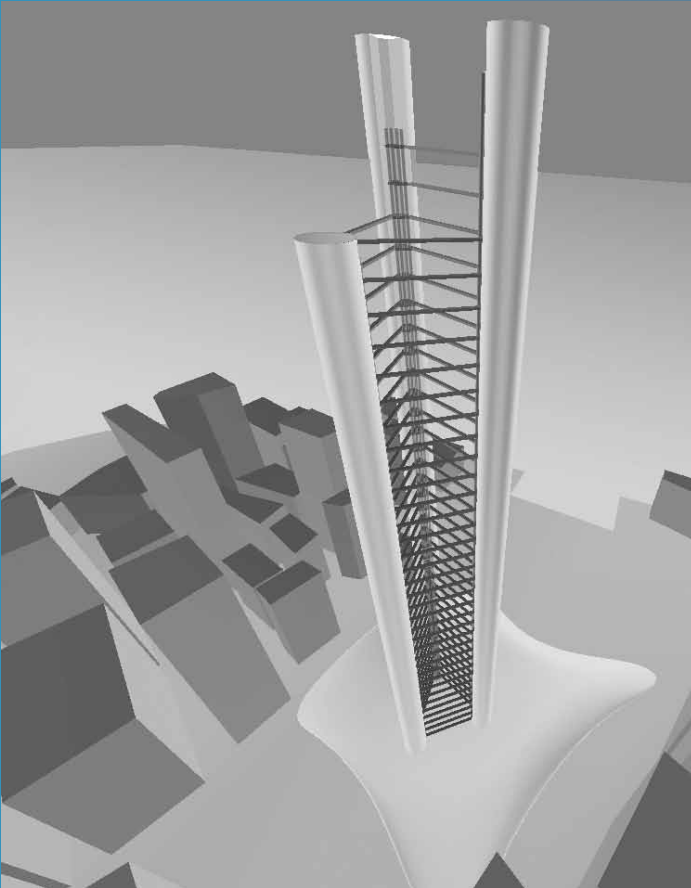
In comparison to the traditional skyscraper many aspects are changed. It is not a stapped repetition of floorplans but a phantastic landscape of intercommunicative spaces.

It is a vision for a structure, which can serve our needs in coomunication, comfort, livability and joy.





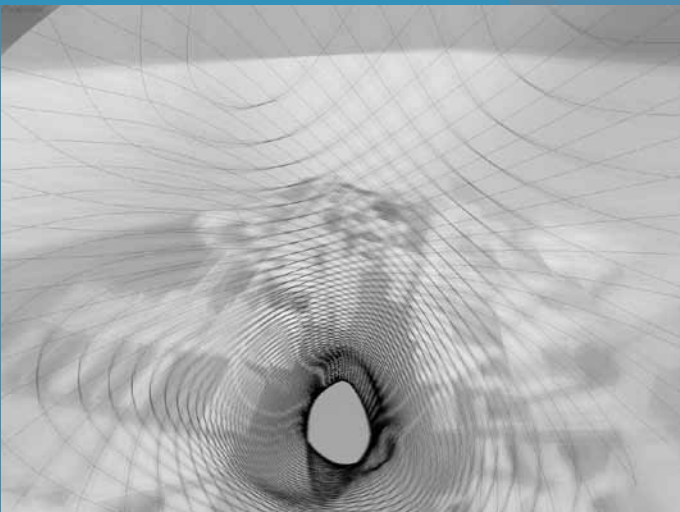
# CONCEPT



## CONSTRUCTION

### SAFE TRIANGLE STEEL CONSTRUCTION

The construction is the inner skeleton of the highrise.. Safety will play a mayor role in the future of any kind of highrise. In this design the aspect of 3 elevator shafts had been choosen in such way, that all the escape ways are connected. If one system fails, another choice can be used fast.



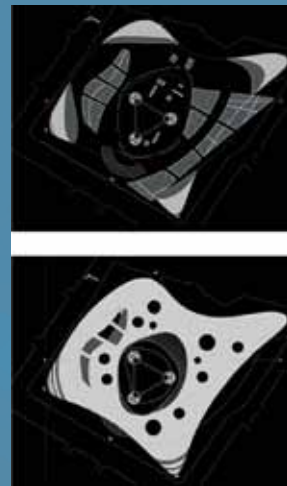
## FASCADE

The design contains a soft skin for the outside, which can react flexible to the outside influences as wind and weather, sun and clouds. The surface is enriched by photo voltaic elements, which produce a mayor part of the energy needs of the tower.

## SPACE ALLOCATION PLAN

There are 3 bodies of concrete structures hanging on the skeleton of the building, which contain the inner program of the tower.

From these bubbles access is given to the hanging gardens. These are placed between the outer skin and the bubbles. Therefore all the spaces of the building are connected to a system of vertical gardens.

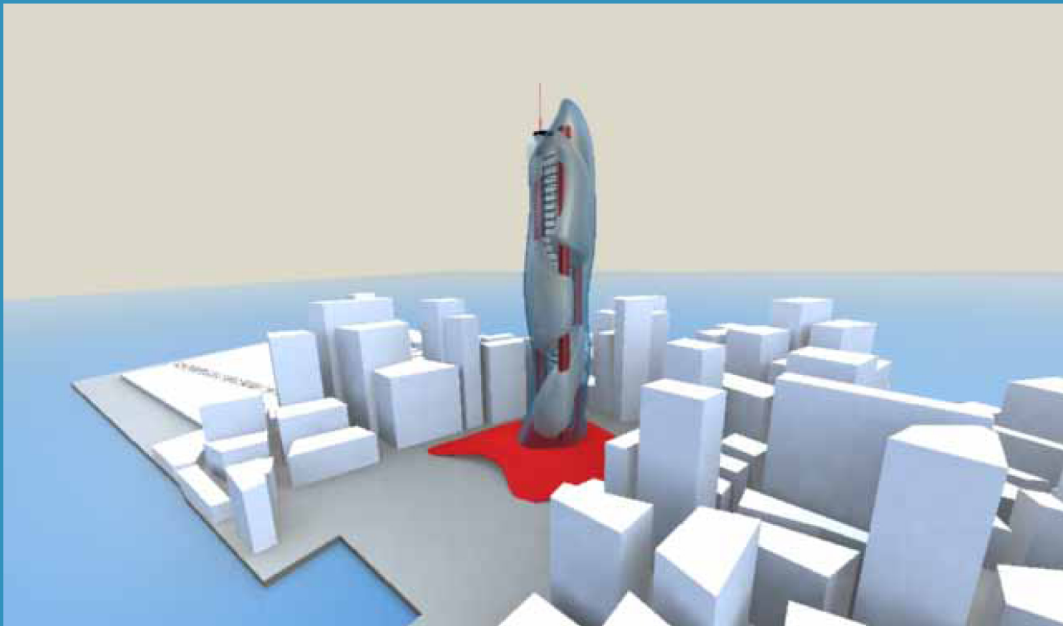


## GROUND FLOOR

The groundfloor is covered by a platform, which keeps the winds away from the streetlevel and entrances of the building.

# VISION

Each project is unique: so should be the response to its challenges. SWA is committed to achieving design excellence, while satisfying the needs of our clients and reaching solutions that respond to the specific context of each project.



SWA Innovation Studio  
Kurfürstendamm 193  
10707 Berlin

Sebastian Wagner  
CEO | Architect  
[swainternational@gmail.com](mailto:swainternational@gmail.com)

++49 176 24313416

SWA group  
destinations of excellence